

# EFFORTLESS. EFFICIENT

EXPERIENCE THE JOY OF WASHING

*Smart wash turbo*

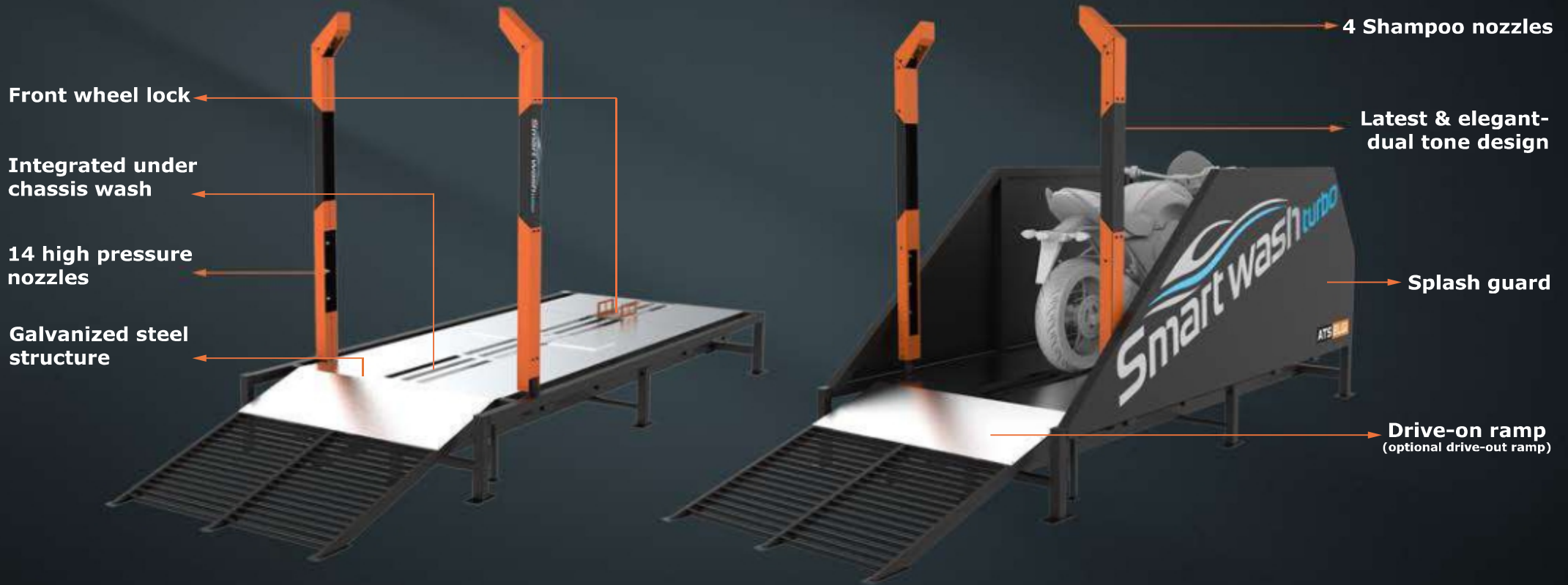
## AUTOMATIC TWO WHEELER WASHER



PROVIDING WASHING SOLUTIONS SINCE 1960'S

**Low Water Consumption | Quick Washing | Less Manpower | Superior Wash**

# EFFORTLESS. EFFICIENT



### Premium accessories

Drive out ramp

Foam lance

Remote control panel

Splash guard

# TECHNICAL SPECIFICATION

## PARAMETER VALUE

Water pump working pressure	17 ± 2 bar
Max. washable bike dimensions	2210 X 1360 X 890 mm <sup>3</sup>
Max. water consumption per bike	45 L
Max. shampoo consumption per bike	20 ml
Cycle time per bike (without wiping)	52 ± 2 sec
No. of water nozzles	14 Nos
NO. of shampoo nozzles	4 Nos
Gun for wheel arch cleaning	1 Nos
Input supply voltage	3Ø, 415+10%/-15%
Frequency	50 ± 5%
Power requirement	7.5 hp
Space required	4100(L)X1450(W)X2050(H)mm <sup>3</sup>
Inlet water connection	1 1/2"(M)
Compressed air requirement	6-8 bar
Inlet air connection	1/2" (F)





# SPECIAL FEATURES



Less water  
consumption



Less man  
power



Superior wash  
quality



Gentle and safe  
on motor bikes



Quick wash



## ATS ELGI Ltd.,

Private Industrial Estate, Kurichi, Coimbatore - 641021, India  
Tel: + 91 -422- 2589999 | Email: enquiry@ats-elgi.com  
Visit us at : [www.ats-elgi.com](http://www.ats-elgi.com)

**Toll-free number : 1800-425-3544**